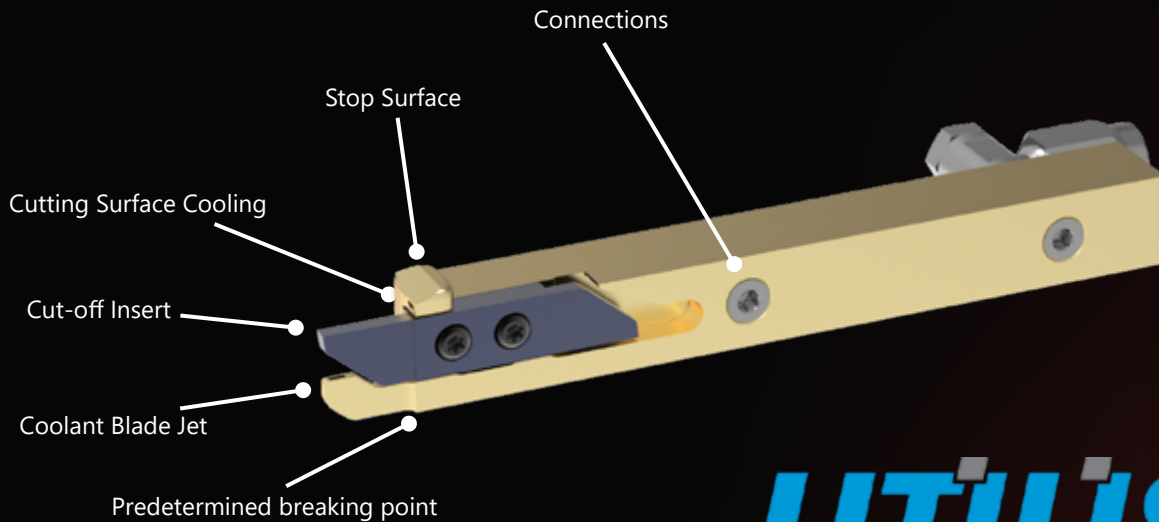




www.genswiss.com  
sales@genswiss.com  
1-413-562-4800

# multidec® CUT Gold Line Tool Holder

Increase Your Tooling Capacity!



**UTILIS®**  
Tooling for High Technology

GenSwiss is the exclusive dealer of the multidec® Cut, Gold Line Tool Holder available for the multidec® CUT 3000 style inserts

## Available multidec® Insert Combinations:

- 3002 Series Part Cut Off
- 3003 Series Front Turning
- 3004 Series Back Turning
- 3005 Series Groove & Turning
- 3006 Series Threading
- 3007 Series Fully Radius Grooving
- 3012 Series Chamfering

www.genswiss.com | 1-(413)-562-4800

sales@genswiss.com

# multidec®-Cut, Gold Line

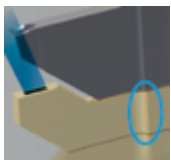
The multidec® Cut, Gold Line tool holder was developed using a special manufacturing process with the goal of enabling more efficient machining for cutoff and grooving on automatic lathes. The newly designed cooling system makes it possible to double the lifetime of the cutting edges as well as increase the cutting parameters without having to accept higher wear.

Two types are available. One "IC+" (IC-Plus) is equipped with chip breaker and clearance angle cooling. The other type "IC-FK" is a version exclusively equipped with clearance angle cooling, which enables the combination with the innovative multidec®-LUBE coolant-thru wedges.

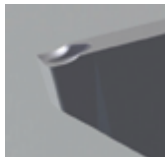
This tool is available for grooving inserts with a minimum width of 2mm.

## ADVANTAGES

- New Manufacturing Technology allows for never-before-seen Coolant-thru Spray Patterns
- Chip Breaker Cooling to Optimize Chip Control, Reduce Built-Up Edge and Improve Tool Life
- Increases Tool Life Tremendously
- PVD Coating for Highest Wear and Corrosion Protection



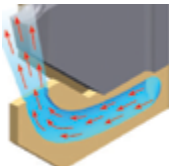
**Predetermined breaking point**  
to avoid damage to the machine tool if the plate brakes



**Cut-off Insert**  
Radial depth of cut up to 10mm with a minimum cut width of 2 mm.



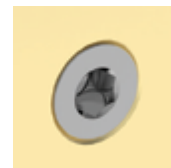
**Stop Surface**  
Stop surface to optimize quick change set-up times



**Coolant Blade Jet**  
Optimized open-surface cooling to increase service life by up to 185%.

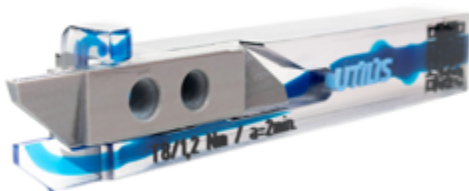


**Cutting Surface Cooling**  
Cutting face cooling to optimize chip control, reduce built-up edge and improve tool life.

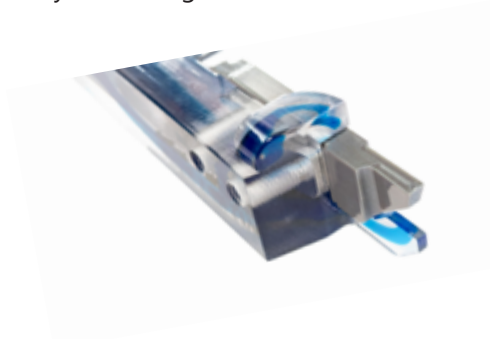


**Connections**  
5X coolant connections to increase flexibility of connection to coolant system and tool holder.

Enhanced coolant pathways appear in blue.  
Pictured below are the 3D print prototype examples (for catalog view only).



Gold Line holders feature additional coolant jets from below the cutting edge, further extending the life of your cutting tools.



# SUCCESS STORY

## Starting situation – Tool life test

Two different tool holders were tested:

– **Reference product / conventional**, but with cooling from the multidec® LUBE wedge on chip breaker.

– **3000- 12-100 (GOLD LINE IC+)** with cooling from holder to chip breaker and clearance angle.

A 3002-2.0-10 LN SPT06 UHM20 TX+ was used for parting off.

Testing took place in accordance with the "Standardized testing process" R&D (research & development).

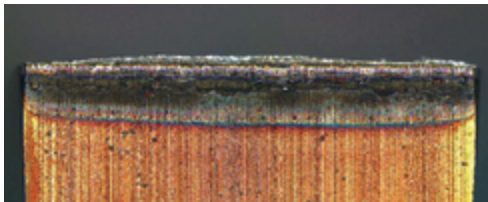
Type of machine	<b>Star SR20</b>
Material No.	<b>1.4435 (316L), stainless steel</b>
Diameter	<b>12 mm</b>
Operation	<b>Parting off</b>
Coolant	<b>Oil</b>
Cutting speed (Vc)	<b>120m/min</b>
Feed (f)	<b>0.04mm /U</b>

**multidec® - CUT, GOLD-LINE**

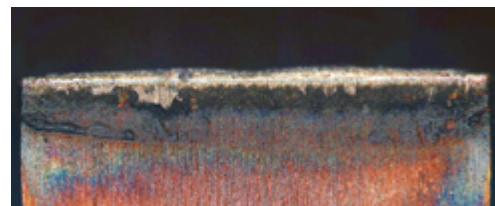
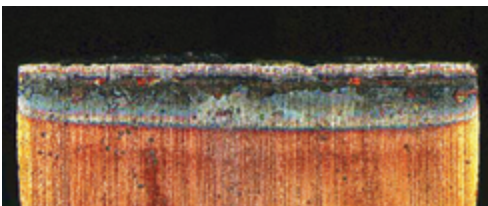
**Reference product/conventional**

**Number of parts**

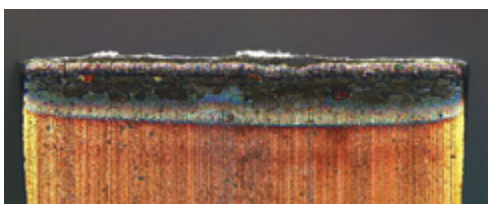
**525**



**1080**

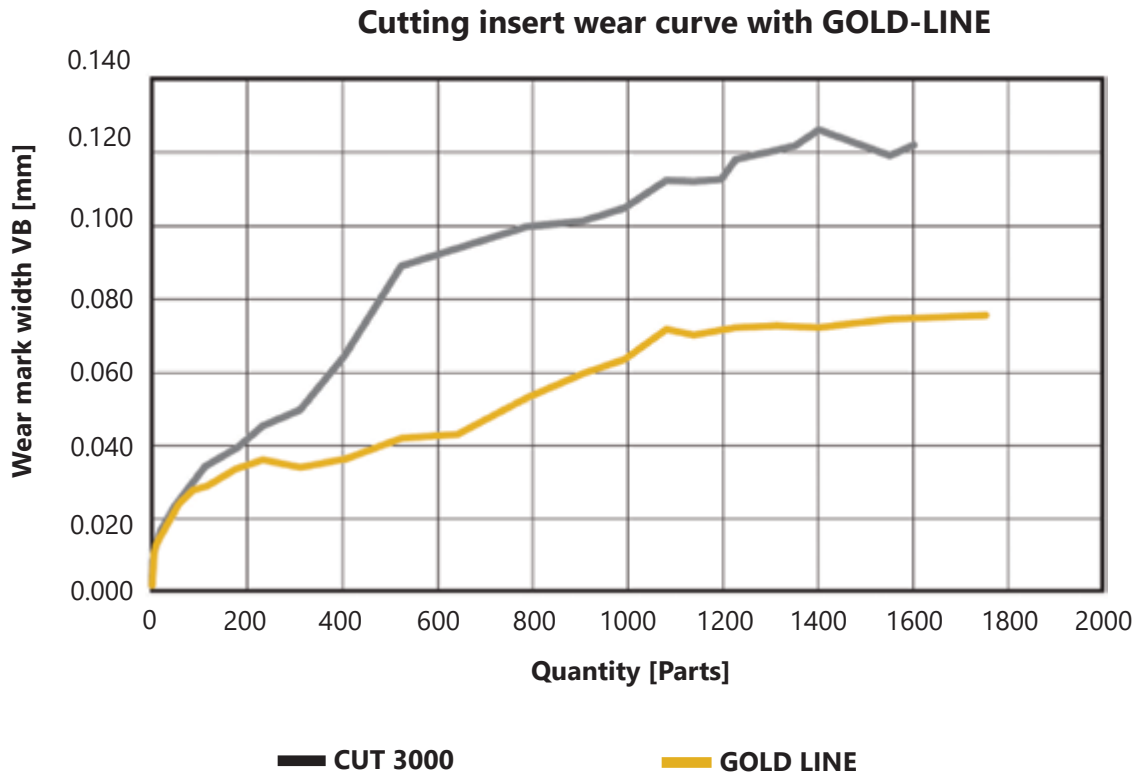


**1600**



## Performance Comparison

The line diagram shows the development of the free face wear on the basis of the test result. The quantity (parts) was shown for illustration purposes.



### Execution of holder/insert

The side on which the insert is located determines whether it is a "left" or "right-hand" holder. For this purpose, the holder is viewed with the insert pointing towards the observer.



Left hand holder



Neutral holder

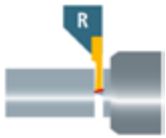
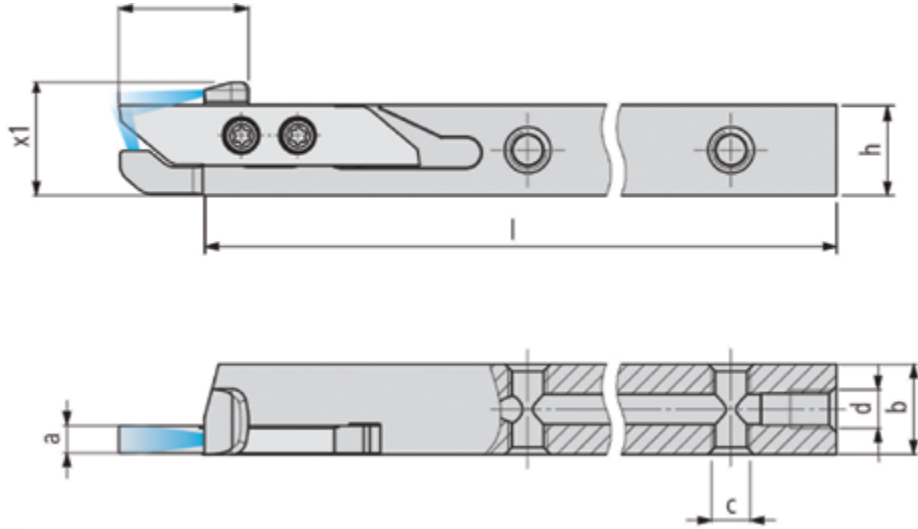
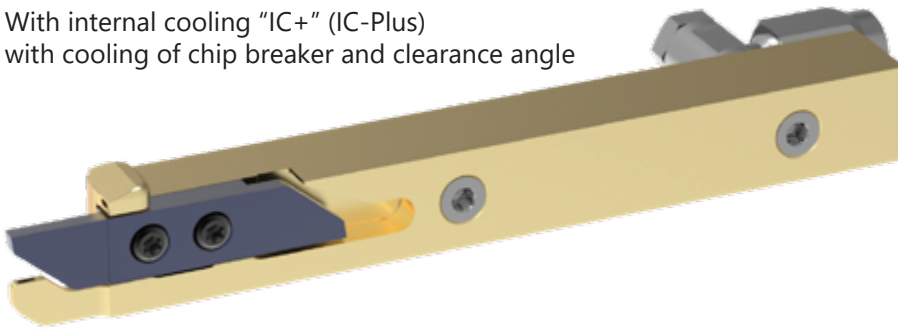


Right hand holder

The right-hand version of the tools is usually shown. (Exceptions are possible).

## multidec®-CUT, GOLD LINE

With internal cooling "IC+" (IC-Plus)  
with cooling of chip breaker and clearance angle

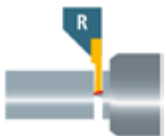


### 3000 Gold Line IC+

Type: Standard  
Coolant-Thru: Rear & Side Ports

Repeatability <10µm

Left Hand Item No.	Description	Right Hand Item No.	Description	Dimensions							
				h	b	l	a	z <sub>1</sub>	x <sub>1</sub>	c	d
7005-215076	3000-12x100 L GL IC+	7005-215075	3000-12x100 R GL IC+	12	12	100	3.5	17.2	15	M5	M5
7005-215190	3000-16x125 L GL IC+	7005-215187	3000-16x125 R GL IC+	16	16	125	3.5	17.2	19	M5	G1/8"
7005-215191	3000-20x125 L GL IC+	7005-215188	3000-20x125 R GL IC+	20	20	125	3.5	17.2	23	M5	G1/8"



### 3000... Gold Line IC+ INCH

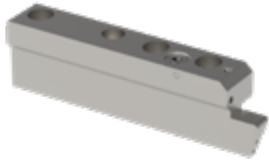
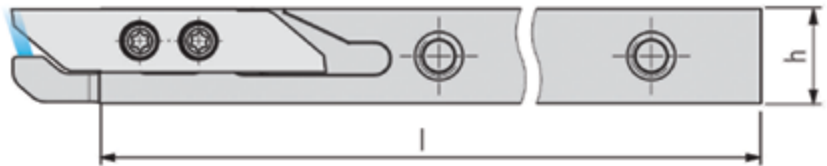
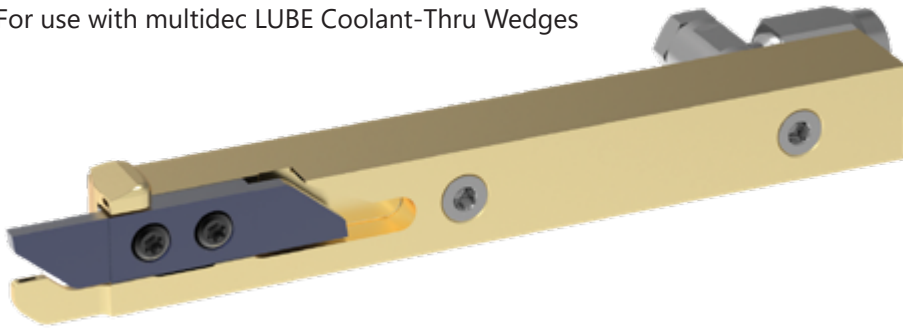
Type: Standard  
Coolant-Thru: Rear & Side Ports

Repeatability <10µm

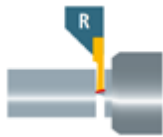
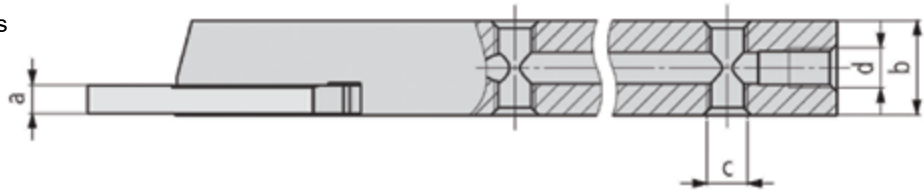
Left Hand Item No.	Description	Right Hand Item No.	Description	Dimensions							
				h	b	l	a	z <sub>1</sub>	x <sub>1</sub>	c	d
7005-215204	3000-1/2"x100 L GL IC+	7005-215200	3000-1/2"x100 R GL IC+	12.7	12.7	100	3.5	17.2	15.7	M5	M5
7005-215205	3000-5/8"x125 L GL IC+	7005-215201	3000-5/8"x125 R GL IC+	15.875	15.875	125	3.5	17.2	18.875	M5	G1/8"
7005-215206	3000-3/4"x125 L GL IC+	7005-215202	3000-3/4"x125 R GL IC+	19.05	19.05	125	3.5	17.2	22.05	M5	G1/8"

## multidec® -CUT, GOLD LINE

For use with multidec LUBE Coolant-Thru Wedges



multidec LUBE Coolant-Thru Wedges



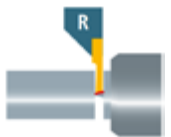
### 3000 Gold Line IC-FK

Type: Standard

Coolant-Thru: Rear & Side Ports

Repeatability <10µm

Left Hand		Right Hand		Dimensions					
Item No.	Description	Item No.	Description	h	b	l	a	c	d
7005-215078	3000-12x100 L GL IC-FK	7005-215077	3000-12x100 R GL IC-FK	12	12	100	3.5	M5	M5
7005-215196	3000-16x125 L GL IC-FK	7005-215193	3000-16x125 R GL IC-FK	16	16	125	3.5	M5	G1/8"
7005-215197	3000-20x125 L GL IC-FK	7005-215194	3000-20x125 R GL IC-FK	20	20	125	3.5	M5	G1/8"



### 3000 Gold Line IC-FK INCH

Type: Standard

Coolant-Thru: Rear & Side Ports

Repeatability <10µm

Left Hand		Right Hand		Dimensions							
Item No.	Description	Item No.	Description	h	b	l	a	z <sub>1</sub>	x <sub>1</sub>	c	d
7005-215212	3000-1/2"x100 L GL IC-FK	7005-215208	3000-1/2"x100 R GL IC-FK	12.7	12.7	100	3.5	17.2	15.7	M5	M5
7005-215213	3000-5/8"x125 L GL IC-FK	7005-215209	3000-5/8"x125 R GL IC-FK	15.875	15.875	125	3.5	17.2	18.875	M5	G1/8"
7005-215214	3000-3/4"x125 L GL IC-FK	7005-215210	3000-3/4"x125 R GL IC-FK	19.05	19.05	125	3.5	17.2	22.05	M5	G1/8"

## Replacement & Spare Parts



### TORX Screw

Item No.	Description	Dimensions
7005-043902	MSP 30090 T08	M3 × 9 T08



### Screw Plug

Item No.	Description	Dimensions
7005-150262	MSP VSR M5 IB2.5	M5
Call for Details	MSP VSR G1/8 IB5	G1/8