

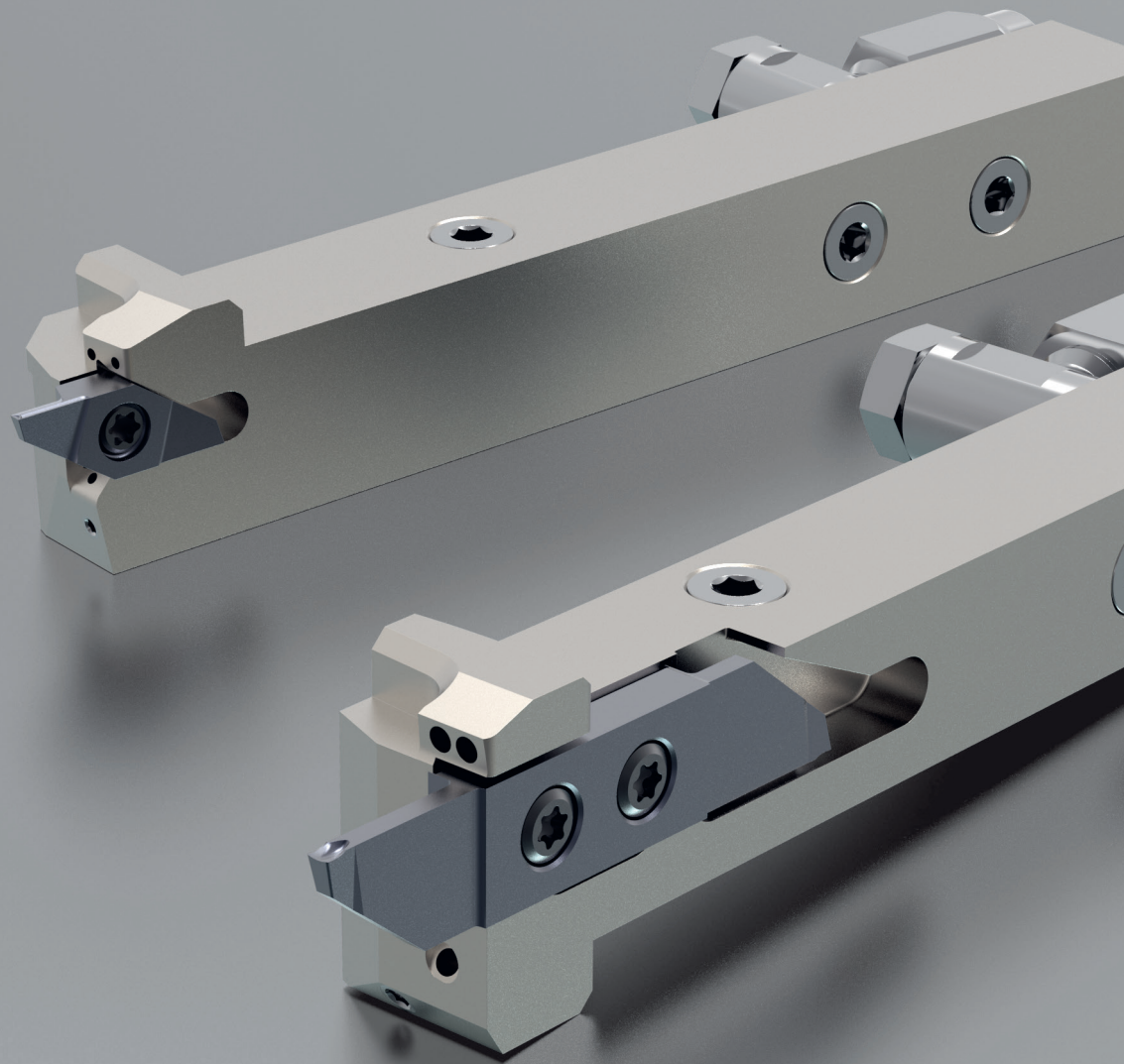
UTILIS
multidec[®]
swiss type tools

ENGLISH 

multidec[®]-CUT

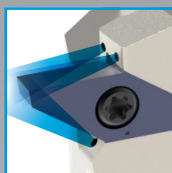
IC-PLUS "IC+" TOOL HOLDER

WITH INTEGRATED COOLANT SUPPLY

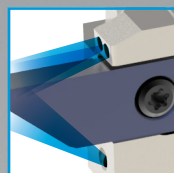


INNOVATION

1600 IC+



3000 IC+



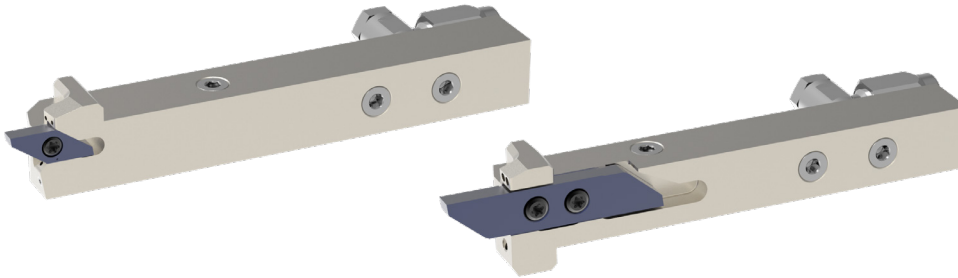
UTILIS[®]
Tooling for High Technology

future since 1915

Cost-efficient processing of modern materials increasingly requires accurate control of the coolant at the cutting edge. Conveying the coolant as close as possible to the cutting edge is often a difficult task in the machine rooms of Swiss type turning lathes.

The multidec®-IC program offers a wide range of holders with integrated cooling. Because of the high precision and pressure, it is possible to discharge the chip quickly and safely from the cutting edge and the workpiece, which protects the cutting edge of the insert. This means significantly longer tool life as well as very reliable serial production.

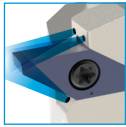
The "IC-Plus" (IC+) cooling with cutting edge and cooling of clearance angle increases significantly the service life of the cutting edges, or the cutting data can be increased without further wear.



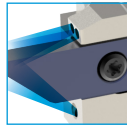
Advantages:

- Each holders has five connection possibilities for the coolant supply and an additional direct connecting via the multidec®-LUB clamping shim (MLU...N...), which has been designed for this purpose.
- Fixed coolant exit allows for small set-up in front of the holder
- With or without high pressure, the coolant medium always hits the cutting edge precisely

1600 IC+



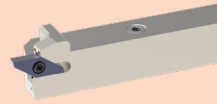
3000 IC+



"IC-Plus" (IC+) holder with integrated cooling with cutting edge and additional cooling of clearance angle

Overview – multidec®-CUT 1600/3000 "IC-PLUS" (IC+) holders

Holders 1600



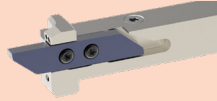
1600... IC+

4

1600... IC+ INCH

4

Holders 3000



3000... IC+

5

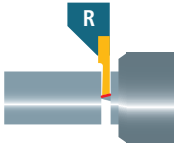
3000... IC+ INCH

5

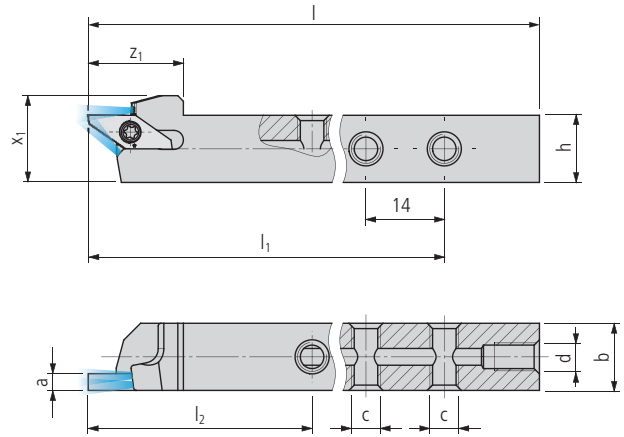
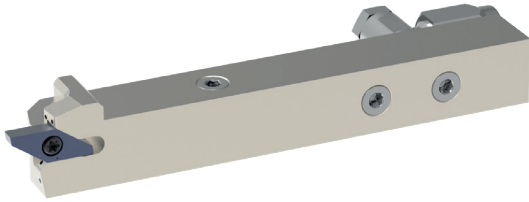
Replacement and spare parts



6



With "IC+" (IC-Plus) internal cooling with cutting edge and additional cooling of clearance angle



1600... IC+

Order designation		Dimensions											Inserts*
L	R	h	b	l	l ₁	l ₂	a	z ₁	x ₁	c	d	Inserts*	

PREMIUM-LINE

1600-08x100 L IC+	■	1600-08x100 R IC+	■	8	10	100	76	40	3	15	14	M5	M5	16...
1600-10x100 L IC+	■	1600-10x100 R IC+	■	10	10	100	76	40	3	15	14	M5	M5	16...
1600-12x100 L IC+	■	1600-12x100 R IC+	■	12	12	100	83	40	3	17	15.5	M5	M5	16...
1600-16x125 L IC+	■	1600-16x125 R IC+	■	16	16	125	100	50	3	17	19.5	M5	G ¹ / ₈ "	16...
1600-20x125 L IC+	■	1600-20x125 R IC+	■	20	20	125	100	50	3	17	23.5	M5	G ¹ / ₈ "	16...

1600... IC+ INCH

Order designation		Dimensions											Inserts*
L	R	h	b	l	l ₁	l ₂	a	z ₁	x ₁	c	d	Inserts*	

PREMIUM-LINE

1600-3/8"x100 L IC+	■	1600-3/8"x100 R IC+	■	9.525	9.525	100	76	40	3	15	14	M5	M5	16...
1600-1/2"x100 L IC+	■	1600-1/2"x100 R IC+	■	12.7	12.7	100	83	40	3	17	16.2	M5	M5	16...
1600-5/8"x125 L IC+	■	1600-5/8"x125 R IC+	■	15.875	15.875	125	100	50	3	17	19.4	M5	G ¹ / ₈ "	16...
1600-3/4"x125 L IC+	■	1600-3/4"x125 R IC+	■	19.05	19.05	125	100	50	3	17	22.6	M5	G ¹ / ₈ "	16...

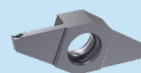


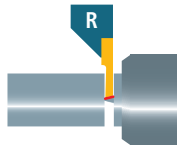
Item 300362

www.utilis.com

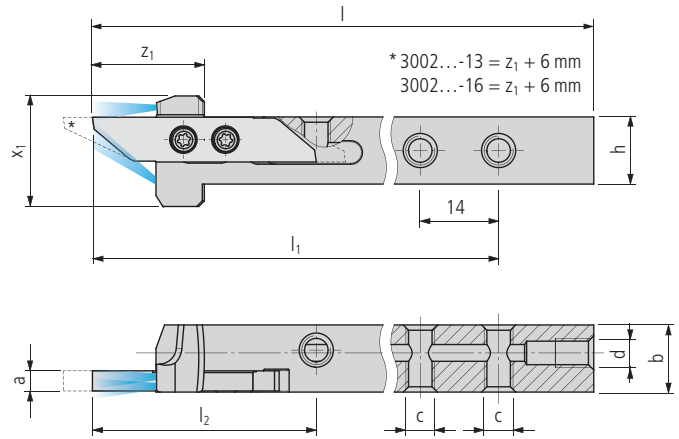
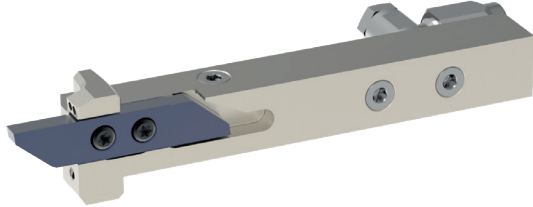
* Can be found in general catalogue 2022/23

- Inserts multidec®-CUT 3000 51...
- Coolant system 671...





With "IC+" (IC-Plus) internal cooling
 with cutting edge and additional cooling of
 clearance angle



3000... IC+

Order designation		Dimensions											Inserts**
L	R	h	b	l	l ₁	l ₂	a	z ₁	x ₁	c	d		

PREMIUM-LINE

3000-12x100 L IC+	■	3000-12x100 R IC+	■	12	12	100	83	40	3.5	20	19.75	M5	M5	30...
3000-16x125 L IC+	■	3000-16x125 R IC+	■	16	16	125	100	50	3.5	20	22.25	M5	G ¹ / ₈ "	30...
3000-20x125 L IC+	■	3000-20x125 R IC+	■	20	20	125	100	50	3.5	20	23.75	M5	G ¹ / ₈ "	30...
3000-25x125 L IC+	■	3000-25x125 R IC+	■	25	25	125	100	50	3.5	20	28.75	M5	G ¹ / ₈ "	30...

3000... IC+ INCH

Order designation		Dimensions											Inserts**
L	R	h	b	l	l ₁	l ₂	a	z ₁	x ₁	c	d		

PREMIUM-LINE

3000-1/2"x100 L IC+	■	3000-1/2"x100 R IC+	■	12.7	12.7	100	83	40	3.5	20	20.45	M5	M5	30...
3000-5/8"x125 L IC+	■	3000-5/8"x125 R IC+	■	15.875	15.875	125	100	50	3.5	20	22.125	M5	G ¹ / ₈ "	30...
3000-3/4"x125 L IC+	■	3000-3/4"x125 R IC+	■	19.05	19.05	125	100	50	3.5	20	22.8	M5	G ¹ / ₈ "	30...



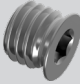
Item 300362

www.utilis.com

** Can be found in general catalogue 2022 / 23

- Inserts multidec®-CUT 3000 123...
- Coolant system 671...



Illustration	Description	Dimensions	Order designation	Holder	holders
	TORX screw	M2.5 × 9 T08	MSP 25090 T08	■	1600...
		M3 × 9 T08	MSP 30090 T08	■	3000...
	Screw plug	M5	MSP VSR M5 IB2.5	■	1600... / 3000... (h ≤ -12)
		G½	MSP VSR G 1/8 IB5	■	1600... / 3000... (h ≥ -16)



Item 300362

www.utilis.com

Can be found in general catalogue 2022 / 23

– TORX screwdrivers

703...



multidec® General catalog 2022/23

With the slogan **"The reference in micro machining"**, UTILIS presents the multidec® general catalogue 2022/23. The general catalogue contains a wide product range with efficient tools for your needs.



Article 300362

multidec®-CUT – G-LINE inserts

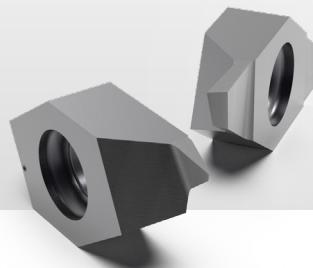
The performance boost in machining. New technology for creation of any three-dimensional chip-breaker shapes.



Article 400870

multidec®-CUT – WATCH-LINE inserts

The WATCH-LINE range of turning inserts is designed for the efficient machining of very small parts in the watchmaking industry.



Article 400918

multidec®-CARE – From the idea to the machine

You have an order or an idea, and you want to know how to implement it? Together, we can realise a cost-effective solution for you.



Article 400885



■ **Utilis AG, Precision Tools**

Kreuzlingerstrasse 22, CH-8555 Müllheim, Switzerland
Phone +41 52 762 62 62, Fax +41 52 762 62 00
info@utilis.com, www.utilis.com