

1/2-32 - UNEF 3A

Maj .4940"-.5000" (.4970")

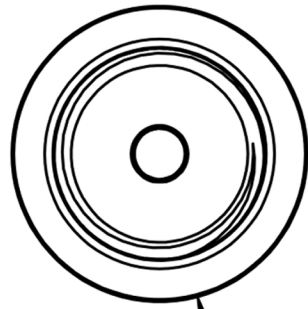
Pd .4771"-.4797" (.4784")

Min .4662"

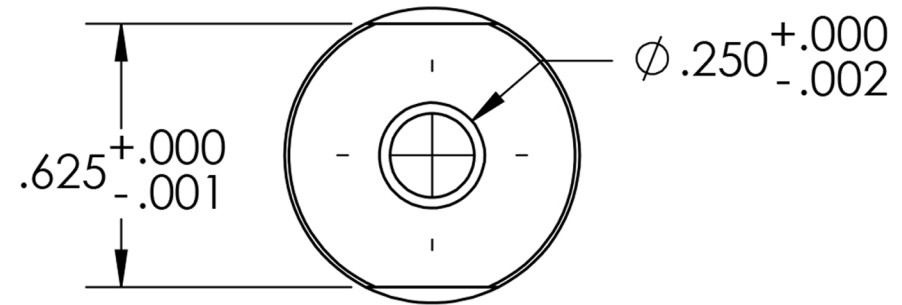
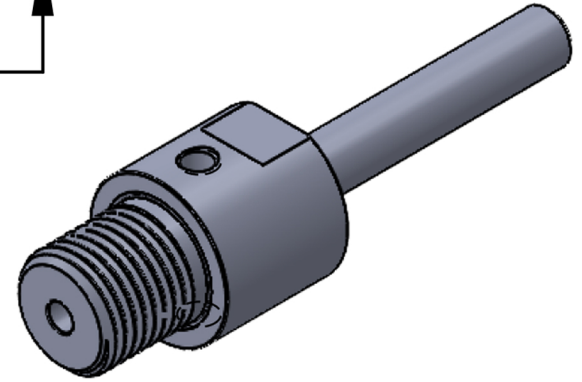
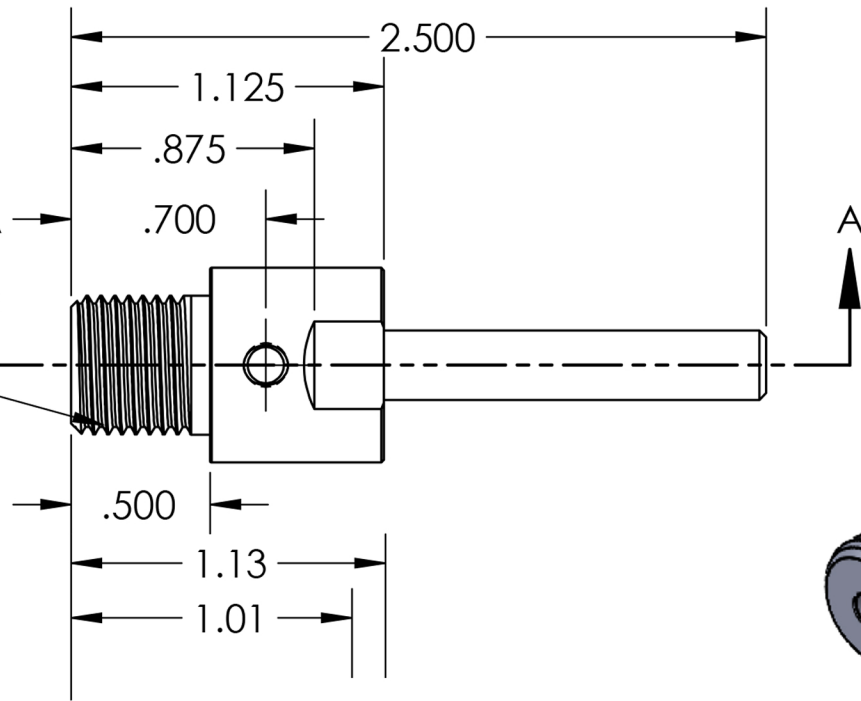
Pitch .03125"

A

A



Ø .700



**PROPRIETARY AND CONFIDENTIAL**  
 THE INFORMATION CONTAINED IN THIS DRAWING IS THE SOLE PROPERTY OF Genevieve Swiss Industries, Inc. ANY REPRODUCTION IN PART OR AS A WHOLE WITHOUT THE WRITTEN PERMISSION OF Genevieve Swiss Industries IS PROHIBITED.

			DIMENSIONS ARE IN INCHES TOLERANCES: FRACTIONAL ± 0.010 ANGULAR: ± 30' TWO PLACE ± 0.005 THREE PLACE ± 0.001
			MATERIAL <b>17-4PH-H900-SS</b>
			FINISH
			APPLICATION
			DO NOT SCALE DRAWING

	NAME	DATE
DRAWN	DM	08/12/20
CHECKED		
ENG APPR.		
MFG APPR.		
Q.A.		

COMMENTS:  
**Break all Sharp Edges .01 - .02**

**Genevieve Swiss Industries, Inc.**  
 6 Old Stage Rd, Westfield MA 01085, 413-562-4800  
 www.genswiss.com

**SAC-500-250125**

SIZE <b>A</b>	DWG. <b>5016-000408</b>	REV. --
SCALE:2:1	WEIGHT:	SHEET 1 OF 1